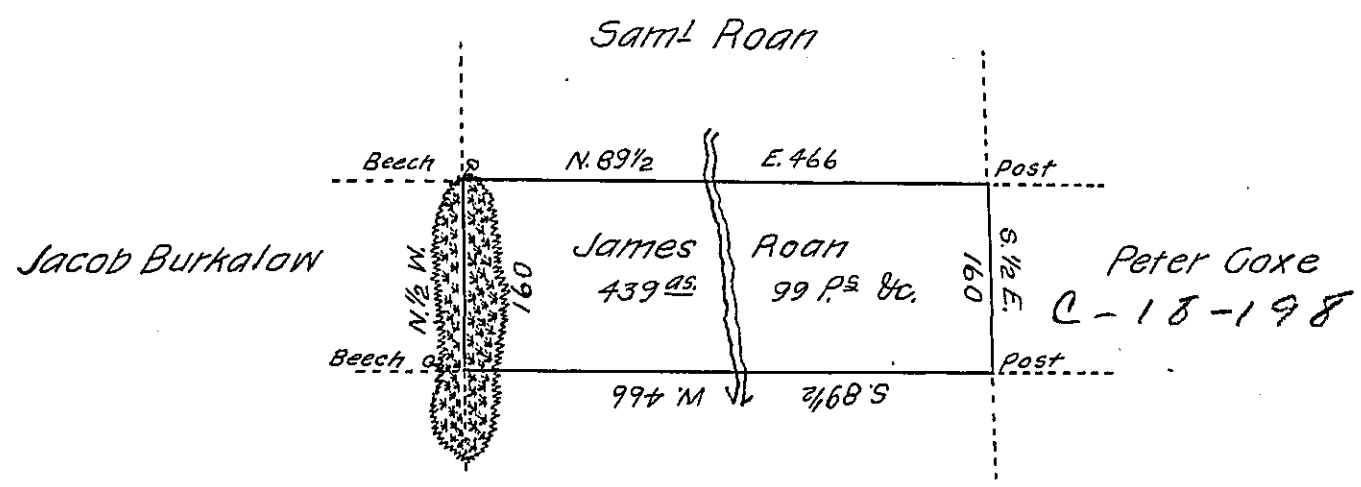


PAGE - 66



Henry Roan

PAGE - 79

A Draught of a tract of land called — Situate in the County of Luzerne, adjoining Henry Roan & others, surveyed the 29<sup>th</sup> day of Octob<sup>r</sup> 1792 for James Roan in pursuance of a warrant bearing date the 3<sup>d</sup> day of April 1792 containing Four hundred thirty-nine acres & ninety-nine perch<sup>s</sup> & the allowance of Six & Gent &c.

To Ant<sup>y</sup> Crothers, D. S.

Dan<sup>l</sup> Brodhead, Esq<sup>r</sup>  
 Surveyor General

IN TESTIMONY that the above is a copy of the original remaining on file in the Department of Internal Affairs of Pennsylvania, made conformably to an Act of Assembly approved the 16th day of February 1833, I have hereunto set my hand and caused the Seal of said Department to be affixed at Harrisburg, this eighteenth day of July, 1907.

*Henry Howell*  
 Secretary of Internal Affairs.